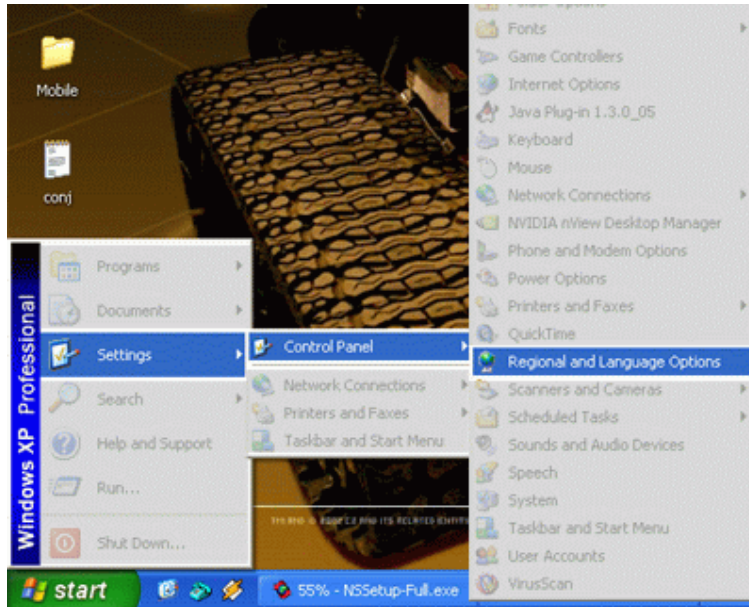


How to Configure Bangla Unicode Support

Windows XP Service Pack 2



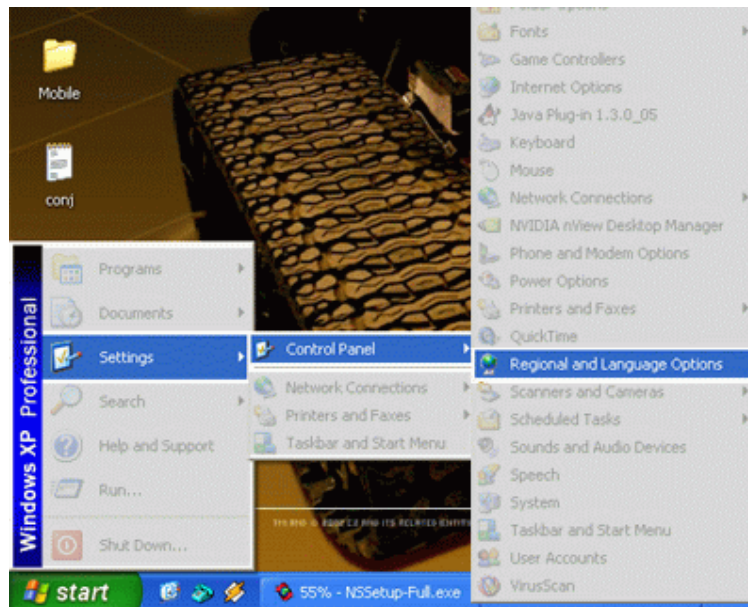
Open *Regional & Language Options* from Control Panel.



In the *Regional and Language Options* window's *Language* tab, check the *Install files for complex scripts and right-to-left languages* check box. Then Click *OK*. Now your windows will prompt you for the Installation CD of Windows. Then restart your computer. After restarting your computer, windows is ready for Bangla.

Windows XP/2003

To see Bangla well, you have to update your Uniscribe engine first. Find detail about Uniscribe Engine from the last page. (You cannot update the engine later, so if you ignore updating the engine now and proceed with the next steps, then you'll not get proper support for Unicode Bangla)



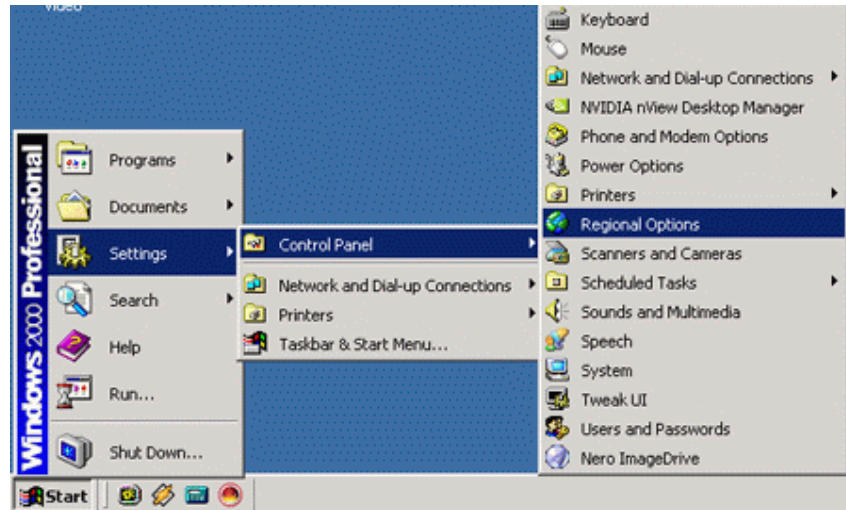
Open *Regional & Language Options* from Control Panel.



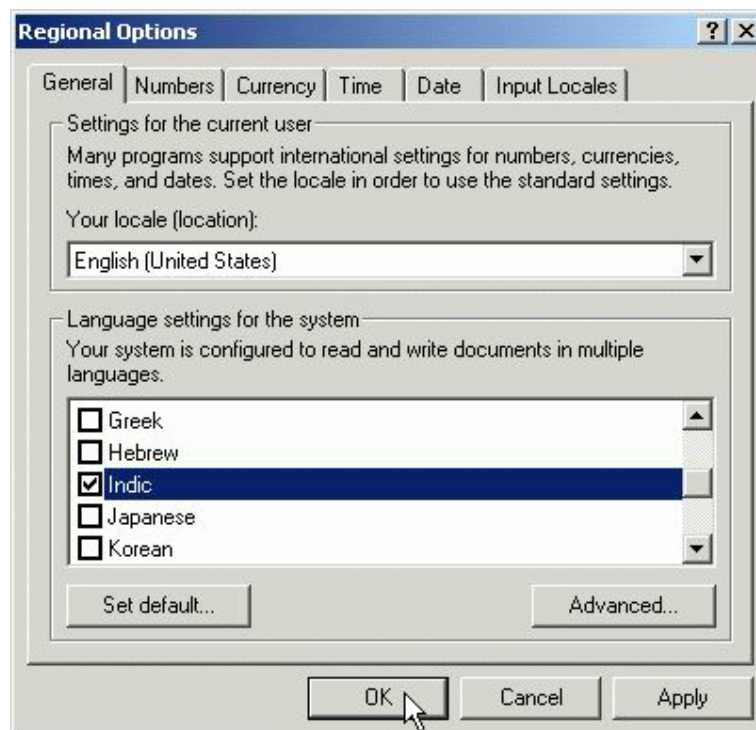
In the Regional and Language Options window's Language tab, check the Install files for complex scripts and right-to-left languages check box. Then Click OK. Now your windows will prompt you for the Installation CD of Windows. Then restart your computer. After restarting your computer, windows is ready for Bangla.

Windows 2000

Update your Uniscribe engine first. Find detail about Uniscribe Engine from the last page.
(You cannot update the engine later, so if you ignore updating the engine now and proceed with the next steps, then you'll not get proper support for Unicode Bangla)



Open *Regional Options* from Control Panel.



Select *Indic* checkbox in the *Language settings for the system* section. Click *OK* Windows will prompt you for it's installation CD. You have to provide the CD and then restart your system. After restarting, Windows will be ready for Bangla.

Update Uniscribe Engine for Bangla

- To get 100% Indic support on your machine. Please download the file from http://poorhackerz.googlepages.com/usp10_hack.htm
- After extracting the zip file, you'll get a DLL file called USP10.dll
- Just put the file in **x:\WINDOWS\system32\dllcache** (this is a hidden folder, so you have to find it out manually) overwriting the older one.
- Again put it to **x:\WINDOWS\system32** overwriting the older one.
- Now windows may ask you for it's installation disk with a notice. You'll tell Windows that you want to continue with the unknown version and don't let him restore the original file. Else nothing will work perfect.

*One more thing, you may have installed your Windows in a different folder, so just find the **system32** folder inside your Windows folder and **dllcache** folder inside the **system32** folder. All the folders are hidden folder so you have to find them manually. Always follow the steps as we mentioned above, first the **dllcache** then **system32**.*

This tutorial taken from-

<http://www.ekushey.org/>